

# Cylinder pressure regulator HP 100

- single stage in brass, nickel and matt chrome plated or stainless steel electropolished



## Description:

The pressure regulator HP 100 is a single stage cylinder pressure regulator and has been developed especially for the gas supply from single cylinders. The pressure regulator is fitted as a standard with gas specific connections to DIN 477 or any other common national standard and a relief valve.

## Application area:

Especially for gases with high requirements on purity up to 6.0 and for laboratories and analytics.

A special cleaning system for the HP Series guarantees the use for ECD applications.

## Technical details:

Body:	stainless steel 1.4404 electropolished and brass, nickel and matt chrome plated
seat:	PCTFE
Diaphragm:	1.4435
Leakage rate: against atmosphere	$10^{-8}$ mbar l/s He
Gas purity:	$\leq 6.0$
Max. Inlet pressure:	300 bar
Outlet pressure range:	0,1-3; 1-6; 1-12; 1-17 bar
Operating temp.:	-20°C to +70°C
Gauges:	safety version to EN 837-1 KL1,6
Dimensions (wxhxd):	180 x 95 x 125
Weight:	1400g

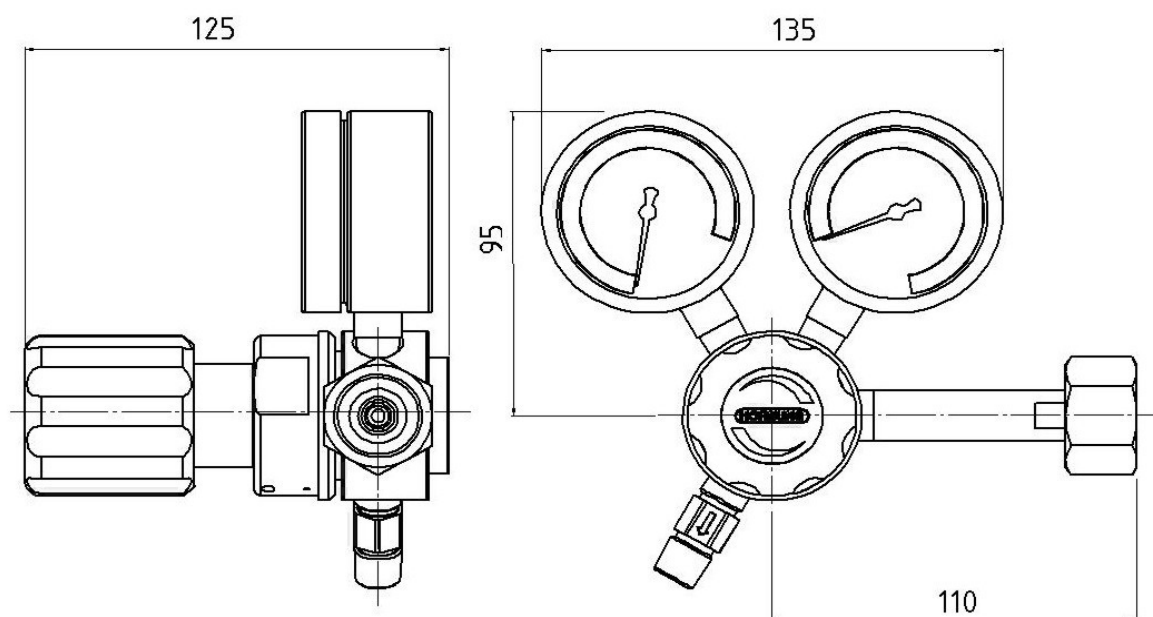
## Hornung Quality standard

The company Hornung is certified to **DIN EN ISO 9001 and ISO 14001:2009**. All single parts are manufactured, assembled and tested by in-house production. The finished parts are therefore under all criteria of German quality control with 100% final inspection.

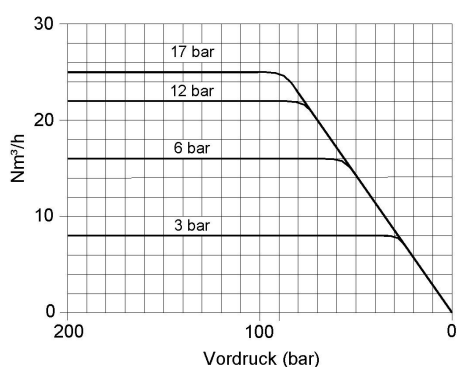
Hornung GmbH  
Rathenaustraße 55, 63263 Neu-Isenburg

Phone: +49 6102 7883-70  
Fax: +49 6102 7883-40

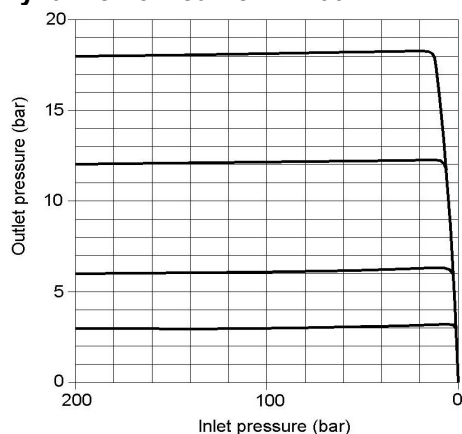
[www.hornung.org](http://www.hornung.org)  
[info@hornung.org](mailto:info@hornung.org)



### Performance curve HP 100



### Dynamic flow curve HP 100

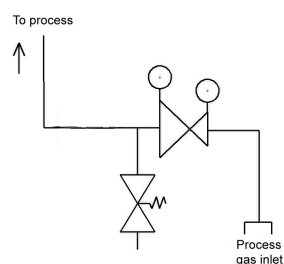


### Accessories:

See total catalogue segment

5. Diaphragm shut-off and metering valves
6. Gauges, screws, compression fittings, cylinder holders and accessories

### Flow diagram:



### Ordering information:

#### Material:

- 1 = stainless steel
- 2 = brass

#### Inlet pressure:

- 1 = 200 bar
- 2 = 300 bar

#### Pressure area:

- 2 = 0,1 - 3 bar
- 3 = 1 - 6 bar
- 4 = 1 - 12 bar
- 5 = 1 - 17 bar

#### Options for the outlet:

- 0 = 1/4" NPT – internal thread
- 1 = compression fitting 6mm
- 2 = diaphragm shut-off valve
- 3 = diaphragm metering valve

Regulator type	1-stage
without purging	66

66-	1	1	2	0	Gas
Type	Mat.	Inlet	Outlet	Option	Gas type